

Preliminary & Subject to Change



Alternative A

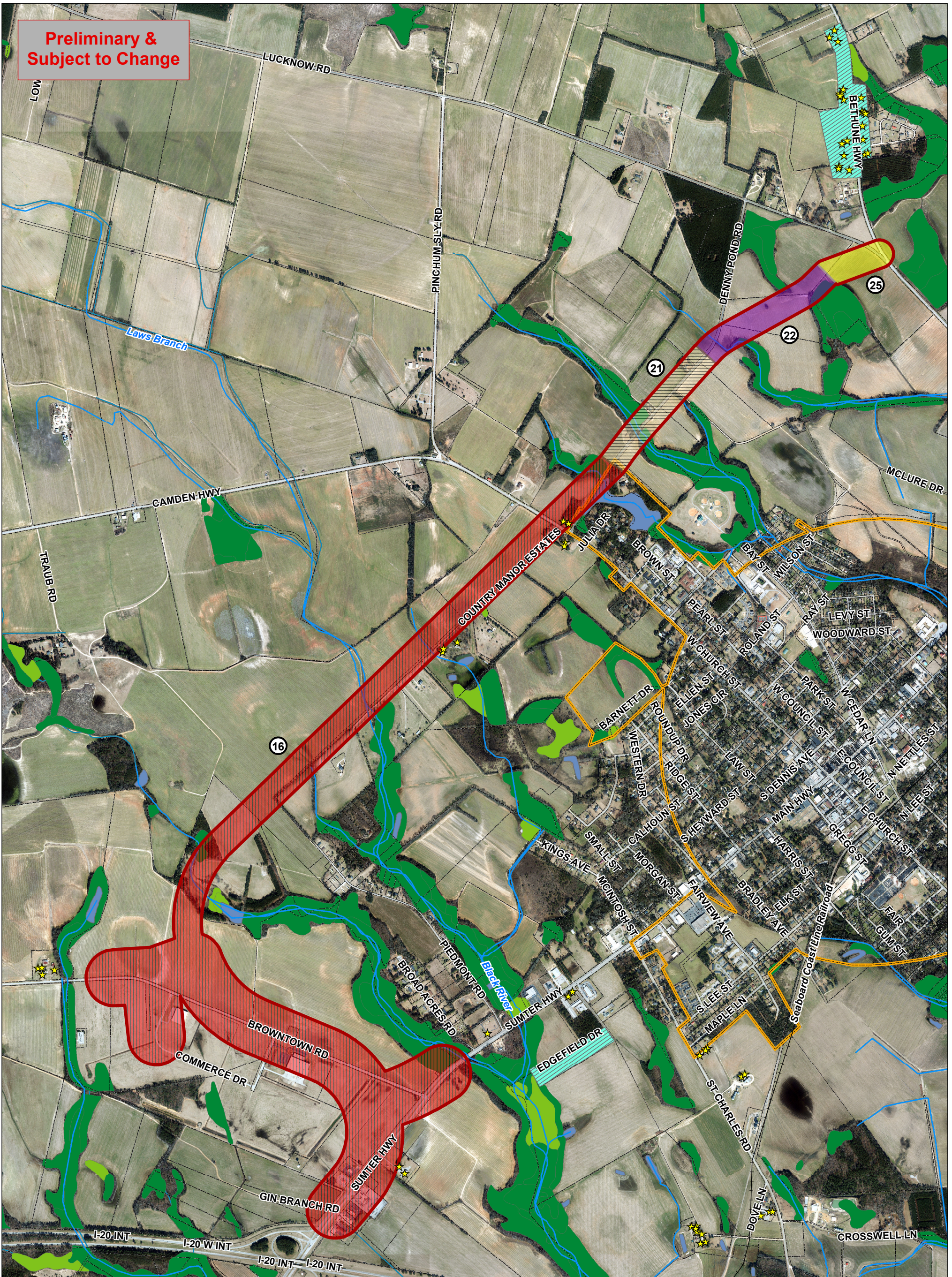
0 0.25 0.5 1 Miles

June 2018

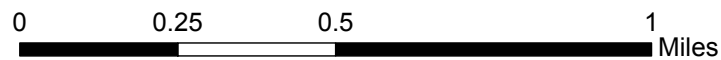
- | | | | | |
|----------------------|-----------------------------|---------------------|--------------------|----------|
| ★ Historic Resources | Historic Districts | Segment 21 (500 ft) | Property Parcels | Pond |
| Rivers & Streams | Alternative A Corridor | Segment 24 (500 ft) | Freshwater Wetland | Riverine |
| Railroad | Segment 16 (500 & 1,000 ft) | Municipal Boundary | Forested Wetland | |



**Preliminary &
Subject to Change**



Alternative B

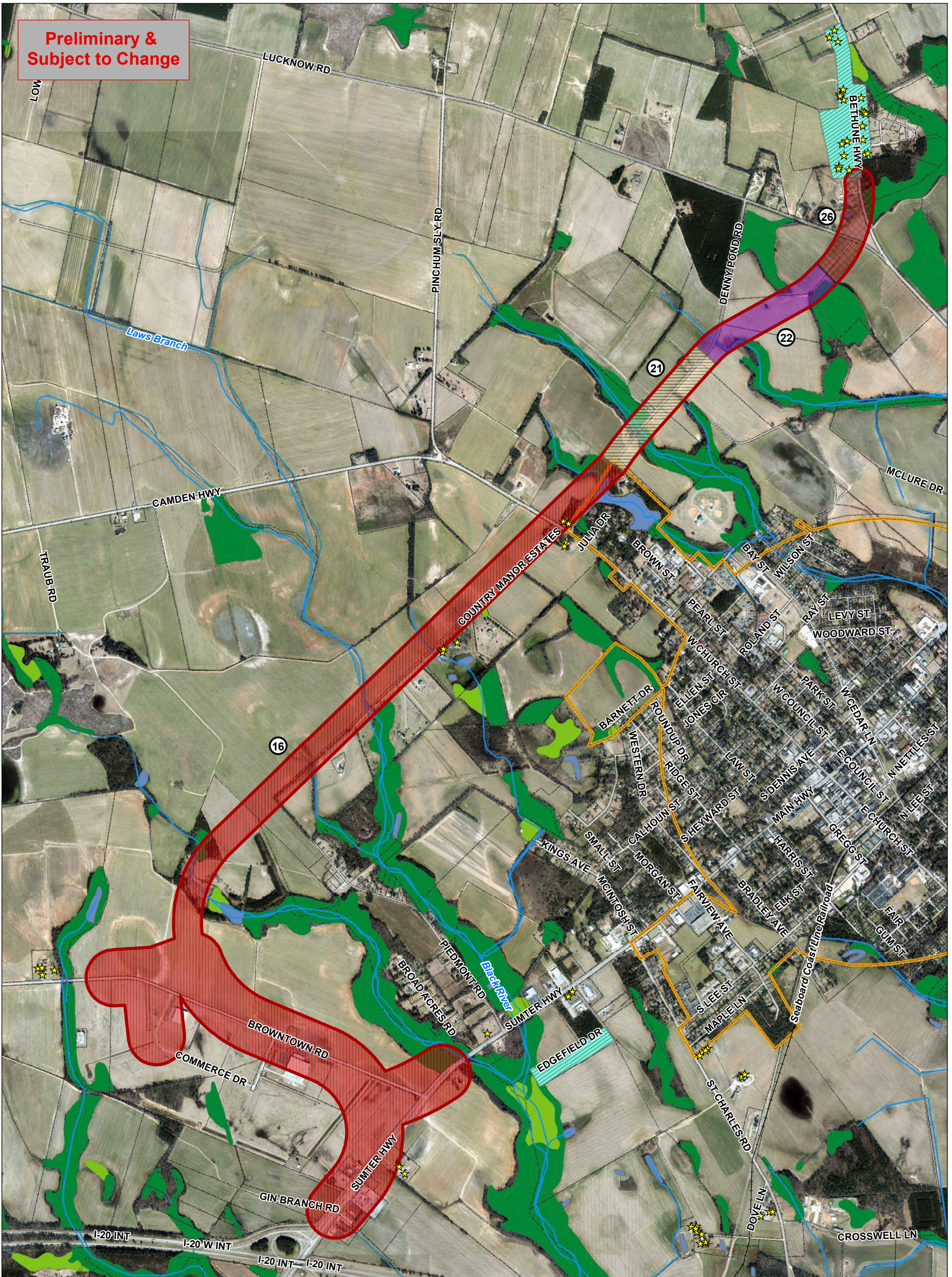


June 2018

- | | | | | |
|----------------------|-----------------------------|---------------------|--------------------|------------------|
| ★ Historic Resources | Historic Districts | Segment 21 (500 ft) | Municipal Boundary | Forested Wetland |
| Rivers & Streams | Alternative B Corridor | Segment 22 (500 ft) | Property Parcels | Pond |
| Railroad | Segment 16 (500 & 1,000 ft) | Segment 25 (500 ft) | Freshwater Wetland | Riverine |



**Preliminary &
Subject to Change**



Alternative C

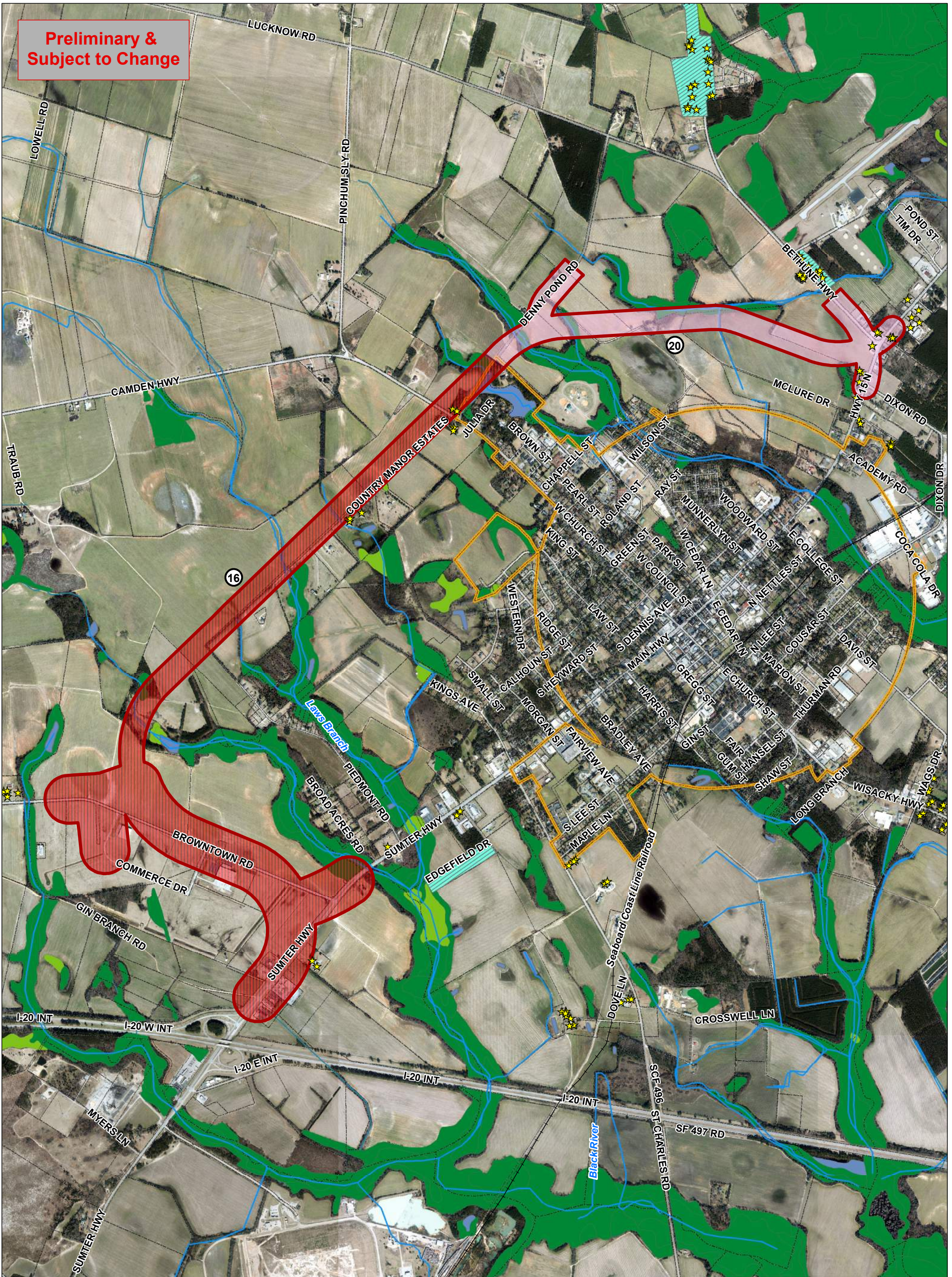
0 0.25 0.5 1 Miles

June 2018

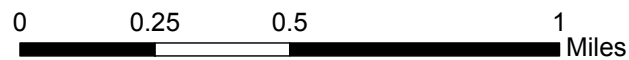
- | | | | | |
|----------------------|-----------------------------|---------------------|--------------------|------------------|
| ★ Historic Resources | Historic Districts | Segment 21 (500 ft) | Municipal Boundary | Forested Wetland |
| Rivers & Streams | Alternative C Corridor | Segment 22 (500 ft) | Property Parcels | Pond |
| Railroad | Segment 16 (500 & 1,000 ft) | Segment 26 (500 ft) | Freshwater Wetland | Riverine |



**Preliminary &
Subject to Change**



Alternative D



June 2018

Historic Resources	Historic Districts	Segment 20 (500 ft)	Freshwater Wetland	Pond
Rivers & Streams	Alternative D Corridor	Municipal Boundary	Forested Wetland	Riverine
Railroad	Segment 16 (500 & 1,000 ft)	Property Parcels		



**Preliminary &
Subject to Change**



Alternative E

0 0.25 0.5 1 Miles

June 2018

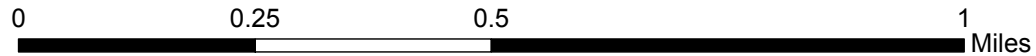
- | | | | | |
|----------------------|------------------------|---------------------|--------------------|------------------|
| ★ Historic Resources | Historic Districts | Segment 19 (500 ft) | Municipal Boundary | Forested Wetland |
| Rivers & Streams | Alternative E Corridor | Segment 21 (500 ft) | Property Parcels | Pond |
| Railroad | Segment 17 (500 ft) | Segment 24 (500 ft) | Freshwater Wetland | Riverine |



**Preliminary &
Subject to Change**



Alternative F



June 2018

- | | | | |
|--------------------|------------------------|---------------------|--------------------|
| Historic Resources | Alternative F Corridor | Segment 22 (500 ft) | Freshwater Wetland |
| Rivers & Streams | Segment 17 (500 ft) | Segment 25 (500 ft) | Forested Wetland |
| Railroad | Segment 19 (500 ft) | Municipal Boundary | Pond |
| Historic Districts | Segment 21 (500 ft) | Property Parcels | Riverine |



**Preliminary &
Subject to Change**



Alternative G

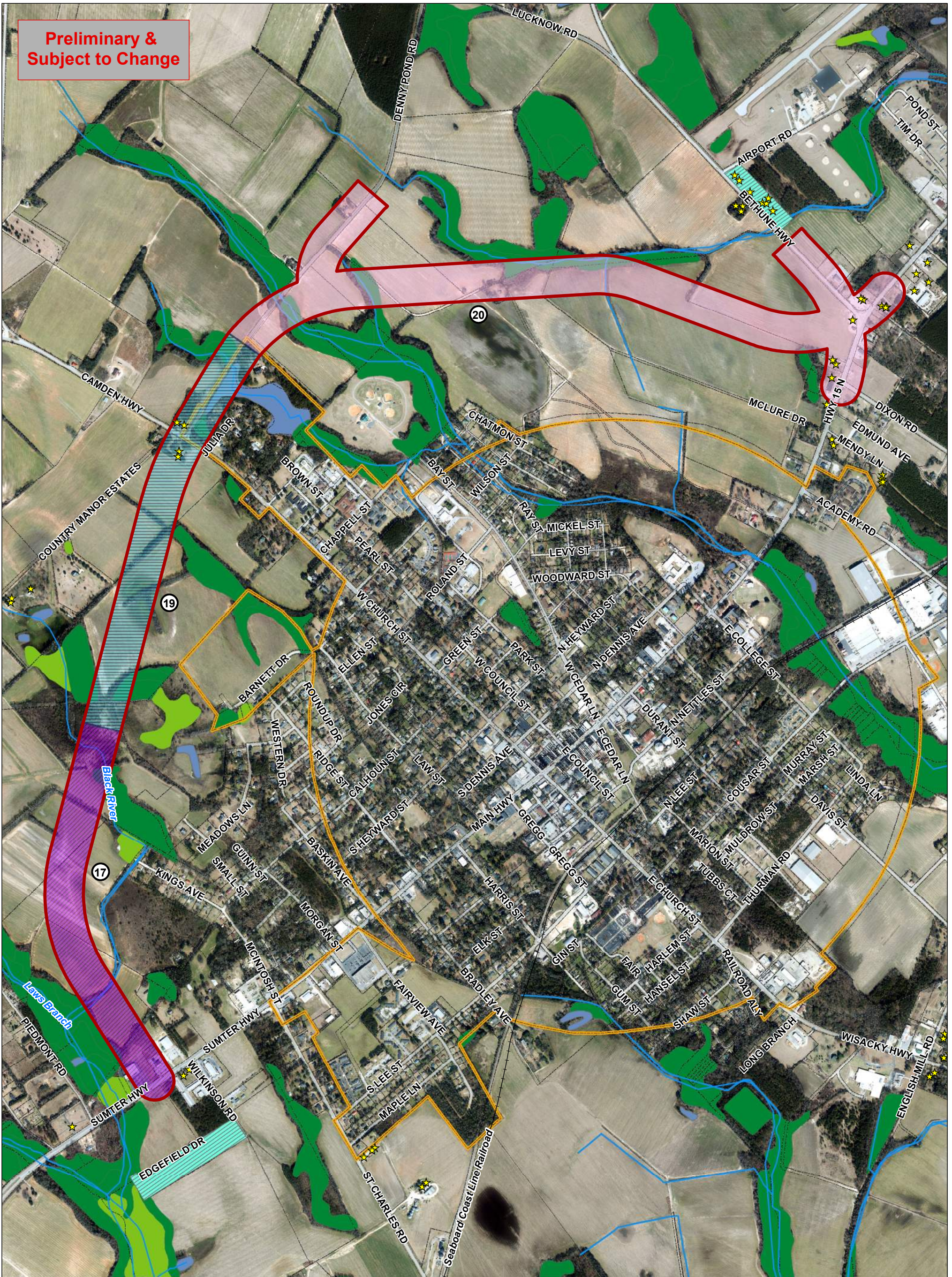
0 0.25 0.5 1 Miles

June 2018

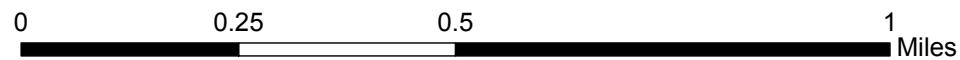
- | | | | |
|--------------------|------------------------|---------------------|--------------------|
| Historic Resources | Alternative G Corridor | Segment 22 (500 ft) | Freshwater Wetland |
| Rivers & Streams | Segment 17 (500 ft) | Segment 26 (500 ft) | Forested Wetland |
| Railroad | Segment 19 (500 ft) | Municipal Boundary | Pond |
| Historic Districts | Segment 21 (500 ft) | Property Parcels | Riverine |



**Preliminary &
Subject to Change**



Alternative H



June 2018

Historic Resources	Historic Districts	Segment 19 (500 ft)	Property Parcels	Pond
Rivers & Streams	Alternative H Corridor	Segment 20 (500 ft)	Freshwater Wetland	Riverine
Railroad	Segment 17 (500 ft)	Municipal Boundary	Forested Wetland	

**Preliminary &
Subject to Change**



Alternative I

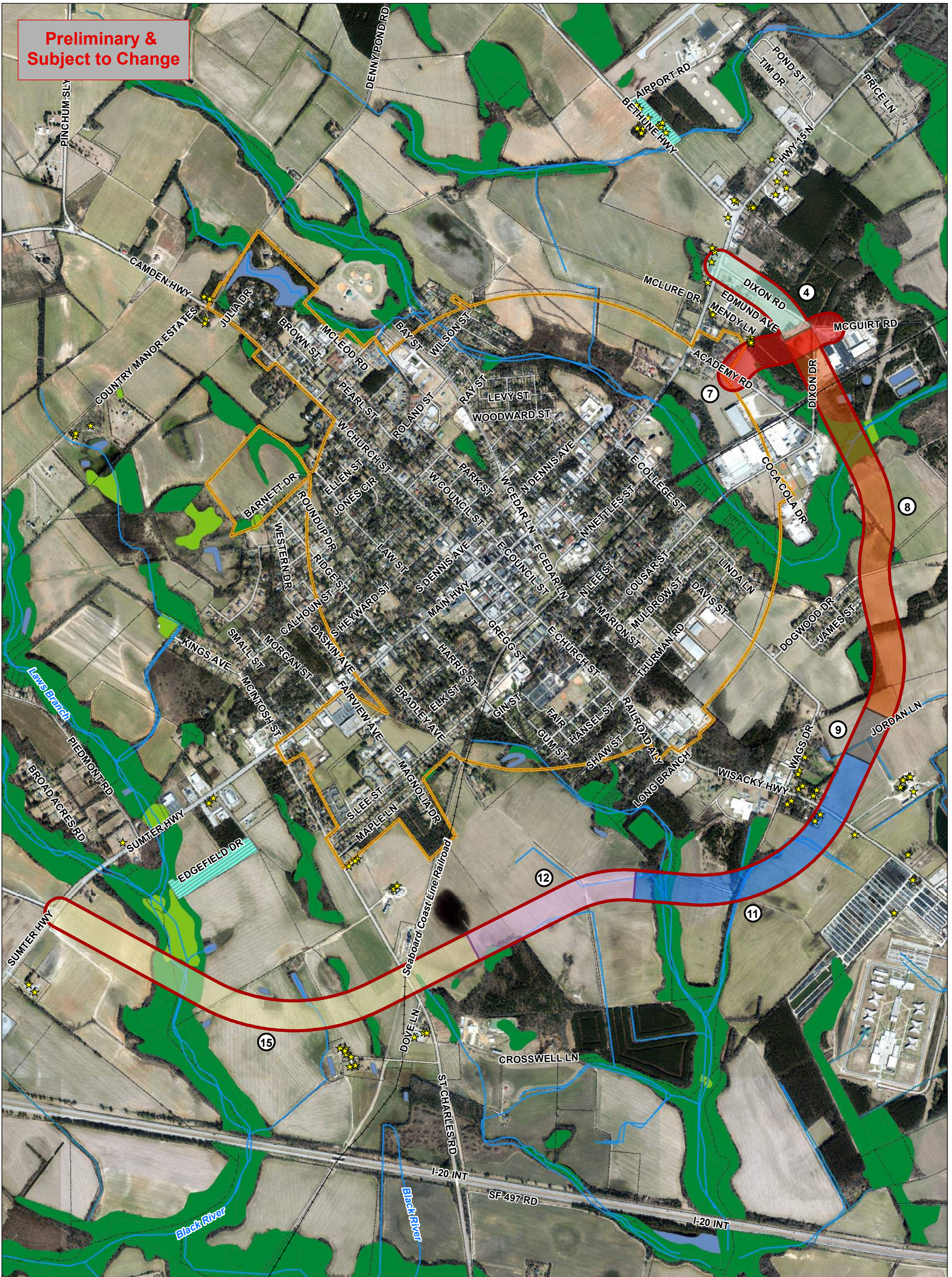
0 0.25 0.5 1 Miles

June 2018

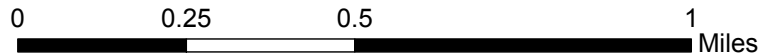
Historic Resources	Alternative I Corridor	Segment 9 (500 ft)	Municipal Boundary	Forested Wetland
Rivers & Streams	Segment 1 (500 ft)	Segment 11 (500 ft)	Property Parcels	Pond
Railroad	Segment 2 (500 ft)	Segment 12 (500 ft)	Freshwater Wetland	Riverine
Historic Districts	Segment 6 (500 ft)	Segment 15 (500 ft)		



**Preliminary &
 Subject to Change**



Alternative J



June 2018

Historic Resources	Alternative J Corridor	Segment 9 (500 ft)	Municipal Boundary	Forested Wetland
Rivers & Streams	Segment 4 (500 ft)	Segment 11 (500 ft)	Property Parcels	Pond
Railroad	Segment 7 (500 ft)	Segment 12 (500 ft)	Freshwater Wetland	Riverine
Historic Districts	Segment 8 (500 ft)	Segment 15 (500 ft)		



**Preliminary &
Subject to Change**



Alternative K

0 0.25 0.5 1 Miles

June 2018

- | | | | | |
|--------------------|------------------------|---------------------|---------------------|--------------------|
| Historic Resources | Alternative K Corridor | Segment 7 (500 ft) | Segment 12 (500 ft) | Freshwater Wetland |
| Rivers & Streams | Segment 1 (500 ft) | Segment 8 (500 ft) | Segment 15 (500 ft) | Forested Wetland |
| Railroad | Segment 2 (500 ft) | Segment 9 (500 ft) | Municipal Boundary | Pond |
| Historic Districts | Segment 5 (500 ft) | Segment 11 (500 ft) | Property Parcels | Riverine |



**Preliminary &
Subject to Change**



Alternative L

0 0.25 0.5 1 Miles

June 2018

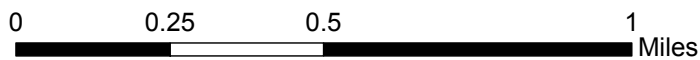
Historic Resources	Alternative L Corridor	Segment 8 (500 ft)	Segment 15 (500 ft)	Forested Wetland
Rivers & Streams	Segment 1 (500 ft)	Segment 9 (500 ft)	Municipal Boundary	Pond
Railroad	Segment 3 (500 ft)	Segment 11 (500 ft)	Property Parcels	Riverine
Historic Districts	Segment 7 (500 ft)	Segment 12 (500 ft)	Freshwater Wetland	



**Preliminary &
 Subject to Change**



Alternative M

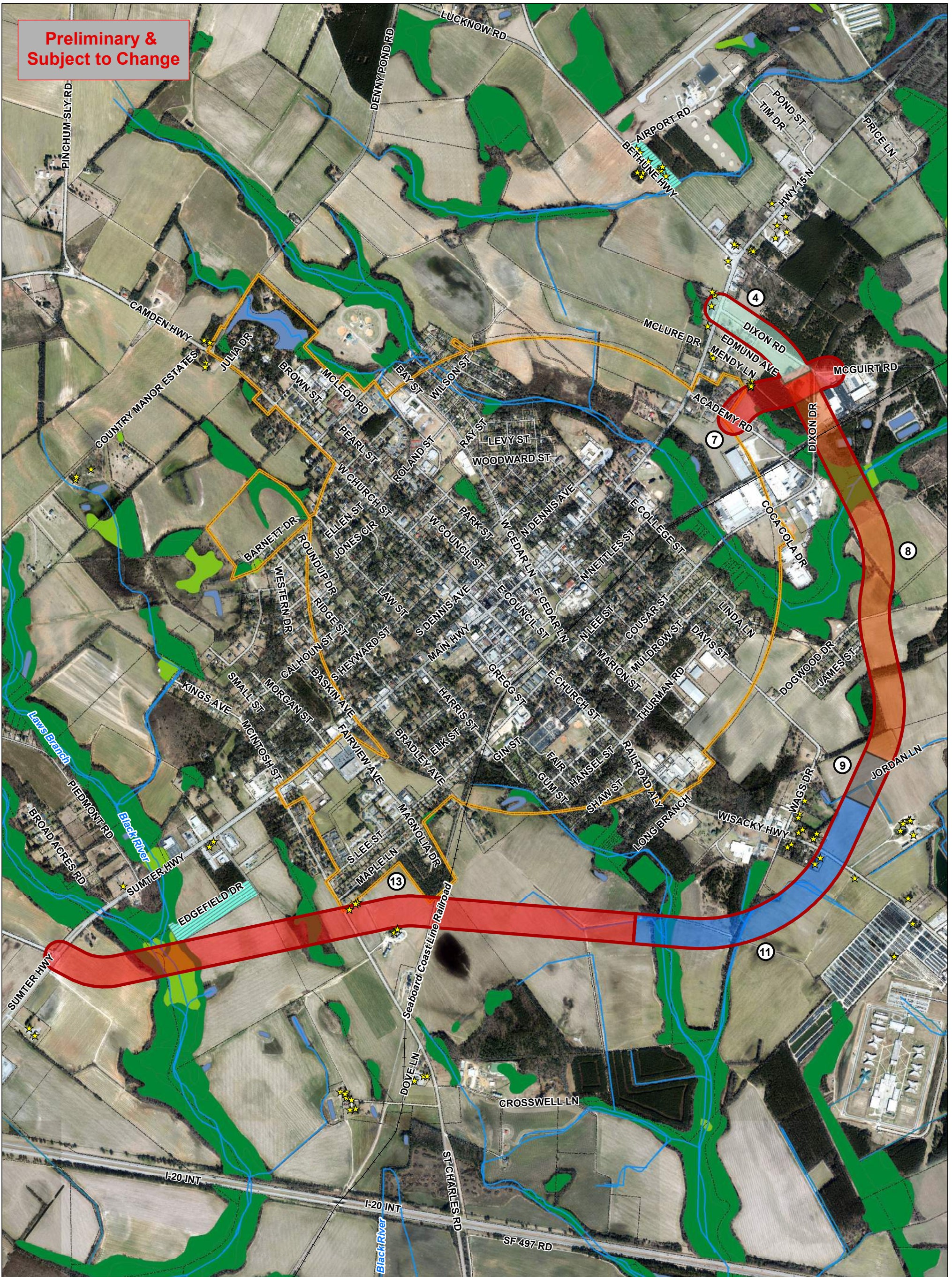


June 2018

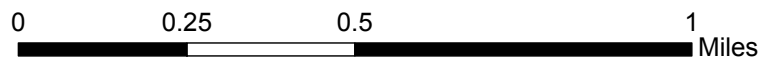
Historic Resources	Alternative M Corridor	Segment 9 (500 ft)	Property Parcels	Pond
Rivers & Streams	Segment 1 (500 ft)	Segment 11 (500 ft)	Freshwater Wetland	Riverine
Railroad	Segment 2 (500 ft)	Segment 13 (500 ft)	Forested Wetland	
Historic Districts	Segment 6 (500 ft)	Municipal Boundary		



**Preliminary &
Subject to Change**



Alternative N



June 2018

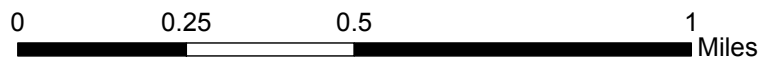
Historic Resources	Alternative N Corridor	Segment 9 (500 ft)	Property Parcels	Pond
Rivers & Streams	Segment 4 (500 ft)	Segment 11 (500 ft)	Freshwater Wetland	Riverine
Railroad	Segment 7 (500 ft)	Segment 13 (500 ft)	Forested Wetland	
Historic Districts	Segment 8 (500 ft)	Municipal Boundary		



**Preliminary &
Subject to Change**



Alternative O



June 2018

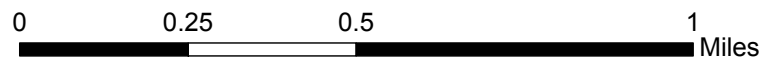
Historic Resources	Alternative O Corridor	Segment 7 (500 ft)	Segment 13 (500 ft)	Forested Wetland
Rivers & Streams	Segment 1 (500 ft)	Segment 8 (500 ft)	Municipal Boundary	Pond
Railroad	Segment 2 (500 ft)	Segment 9 (500 ft)	Property Parcels	Riverine
Historic Districts	Segment 5 (500 ft)	Segment 11 (500 ft)	Freshwater Wetland	



**Preliminary &
Subject to Change**



Alternative P



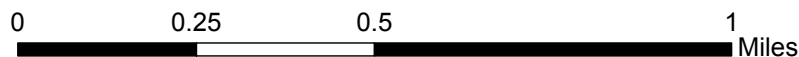
June 2018

Historic Resources	Alternative P Corridor	Segment 8 (500 ft)	Municipal Boundary	Pond
Rivers & Streams	Segment 1 (500 ft)	Segment 9 (500 ft)	Property Parcels	Riverine
Railroad	Segment 3 (500 ft)	Segment 11 (500 ft)	Freshwater Wetland	
Historic Districts	Segment 7 (500 ft)	Segment 13 (500 ft)	Forested Wetland	

**Preliminary &
Subject to Change**



Alternative Q



June 2018

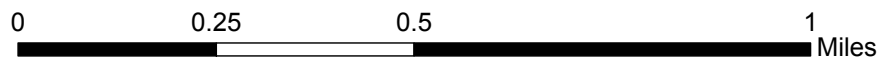
- | | | | | |
|----------------------|------------------------|-----------------------|--------------------|------------------|
| ★ Historic Resources | Alternative Q Corridor | Segment 9 (500 ft) | Municipal Boundary | Forested Wetland |
| Rivers & Streams | Segment 1 (500 ft) | Segment 11 (500 ft) | Property Parcels | Pond |
| Railroad | Segment 2 (500 ft) | Segment 12 (500 ft) | Freshwater Wetland | Riverine |
| Historic Districts | Segment 6 (500 ft) | Segment 14 (1,100 ft) | | |



**Preliminary &
Subject to Change**



Alternative R



June 2018

- | | | | | |
|--------------------|------------------------|-----------------------|--------------------|------------------|
| Historic Resources | Alternative R Corridor | Segment 9 (500 ft) | Municipal Boundary | Forested Wetland |
| Rivers & Streams | Segment 4 (500 ft) | Segment 11 (500 ft) | Property Parcels | Pond |
| Railroad | Segment 7 (500 ft) | Segment 12 (500 ft) | Freshwater Wetland | Riverine |
| Historic Districts | Segment 8 (500 ft) | Segment 14 (1,100 ft) | | |



**Preliminary &
Subject to Change**



Alternative S

0 0.25 0.5 1 Miles

June 2018

Historic Resources	Alternative S Corridor	Segment 7 (500 ft)	Segment 12 (500 ft)	Freshwater Wetland
Rivers & Streams	Segment 1 (500 ft)	Segment 8 (500 ft)	Segment 14 (1,100 ft)	Forested Wetland
Railroad	Segment 2 (500 ft)	Segment 9 (500 ft)	Municipal Boundary	Pond
Historic Districts	Segment 5 (500 ft)	Segment 11 (500 ft)	Property Parcels	Riverine



**Preliminary &
Subject to Change**



Alternative T

0 0.25 0.5 1 Miles

June 2018

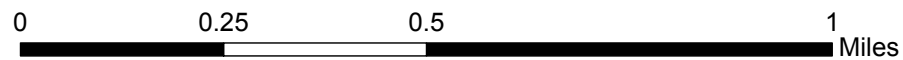
- | | | | | |
|----------------------|------------------------|---------------------|-----------------------|------------------|
| ★ Historic Resources | Alternative T Corridor | Segment 8 (500 ft) | Segment 14 (1,100 ft) | Forested Wetland |
| — Rivers & Streams | Segment 1 (500 ft) | Segment 9 (500 ft) | Municipal Boundary | Pond |
| —+— Railroad | Segment 3 (500 ft) | Segment 11 (500 ft) | Property Parcels | Riverine |
| ▨ Historic Districts | Segment 7 (500 ft) | Segment 12 (500 ft) | Freshwater Wetland | |



**Preliminary &
 Subject to Change**



Alternative U

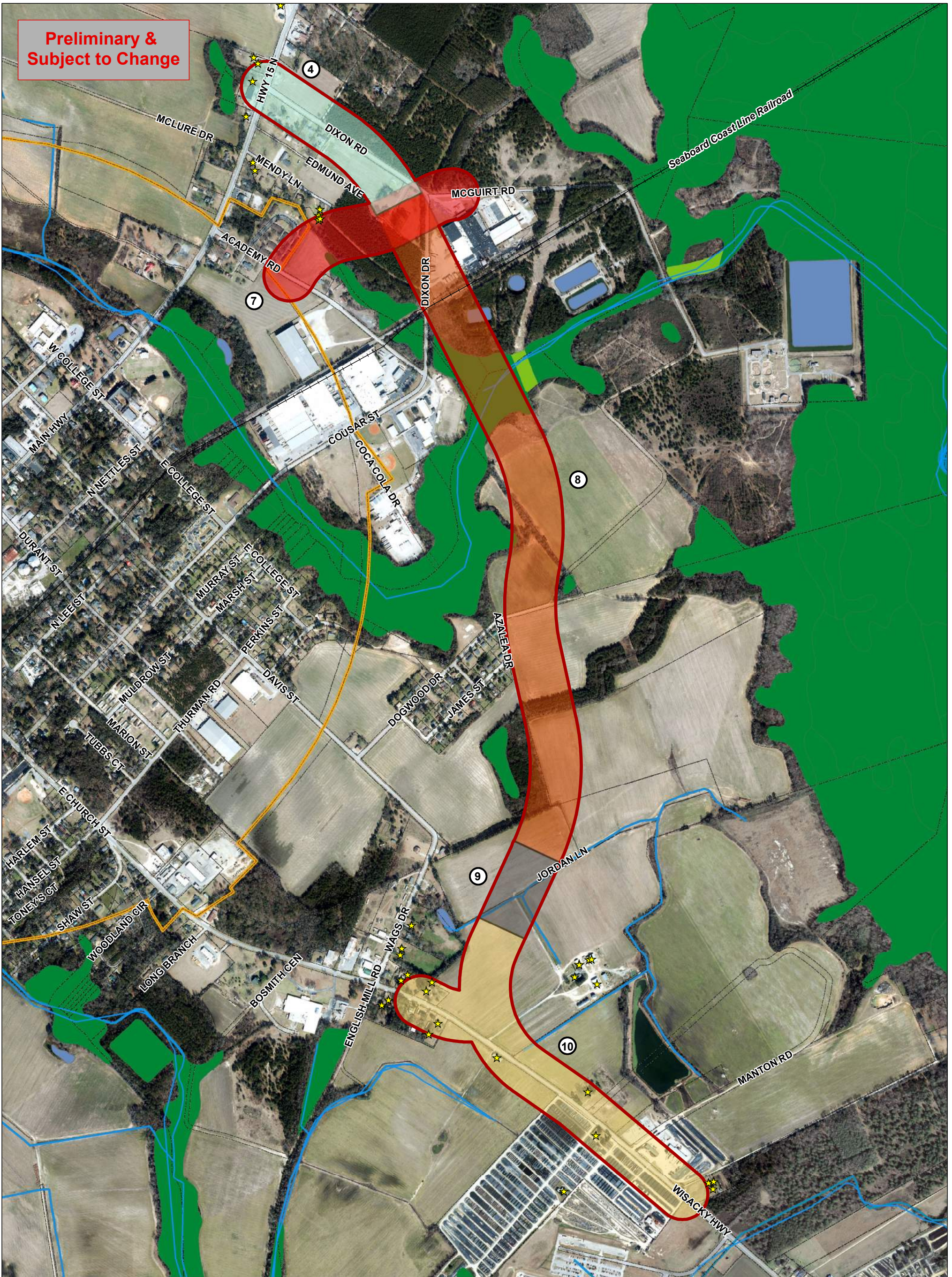


June 2018

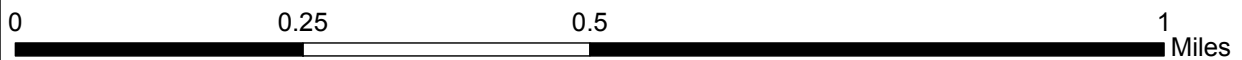
- | | | | |
|--------------------|------------------------|---------------------|--------------------|
| Historic Resources | Alternative U Corridor | Segment 9 (500 ft) | Freshwater Wetland |
| Rivers & Streams | Segment 1 (500 ft) | Segment 10 (500 ft) | Forested Wetland |
| Railroad | Segment 2 (500 ft) | Municipal Boundary | Pond |
| Historic Districts | Segment 6 (500 ft) | Property Parcels | Riverine |



**Preliminary &
Subject to Change**



Alternative V

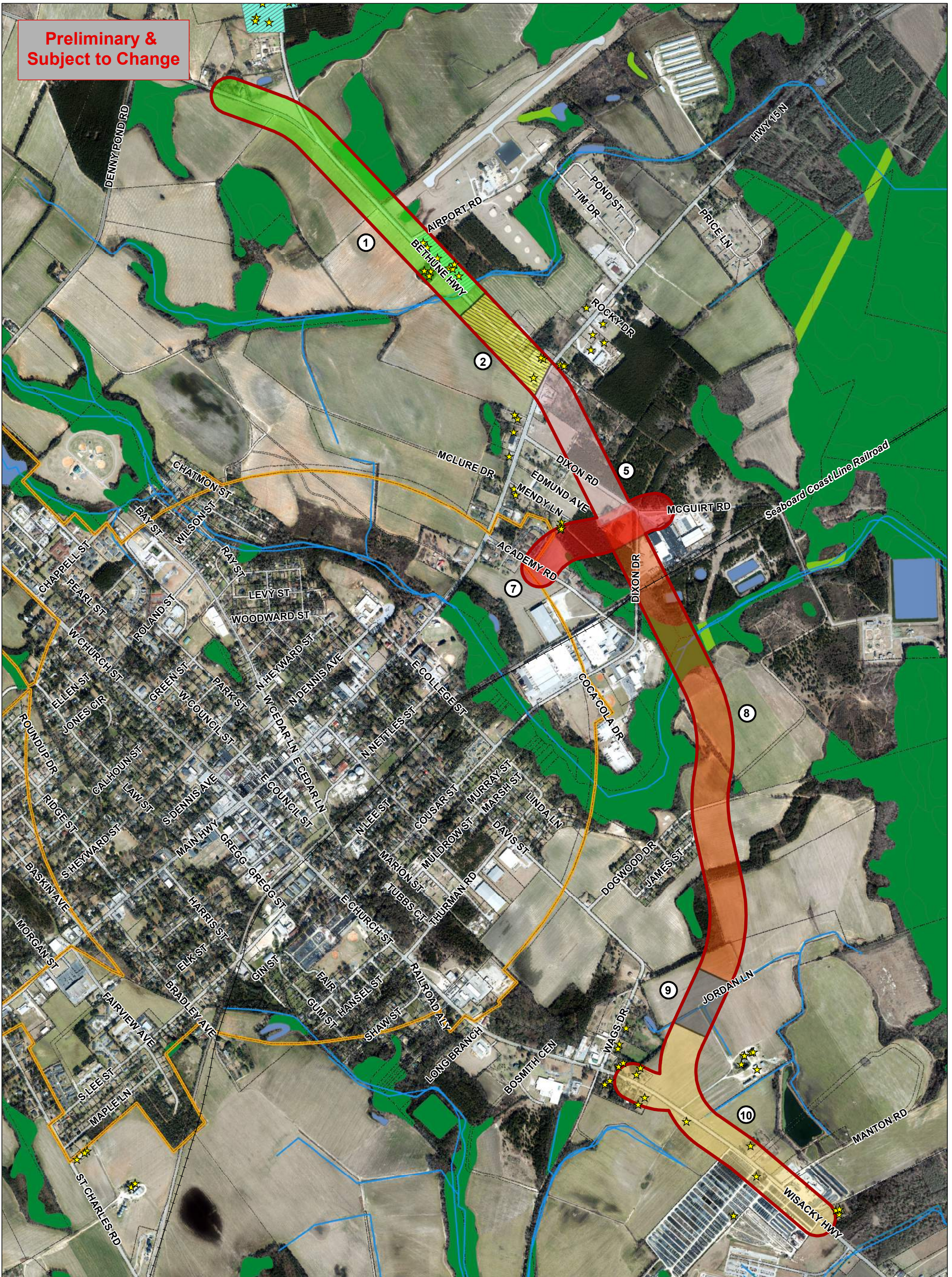


June 2018

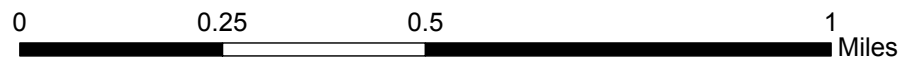
- | | | | |
|----------------------|------------------------|---------------------|--------------------|
| ★ Historic Resources | Alternative V Corridor | Segment 9 (500 ft) | Freshwater Wetland |
| Rivers & Streams | Segment 4 (500 ft) | Segment 10 (500 ft) | Forested Wetland |
| Railroad | Segment 7 (500 ft) | Municipal Boundary | Pond |
| Historic Districts | Segment 8 (500 ft) | Property Parcels | Riverine |



**Preliminary &
Subject to Change**



Alternative W



June 2018

Historic Resources	Alternative W Corridor	Segment 7 (500 ft)	Municipal Boundary	Forested Wetland
Rivers & Streams	Segment 1 (500 ft)	Segment 8 (500 ft)	Property Parcels	Pond
Railroad	Segment 2 (500 ft)	Segment 9 (500 ft)	Freshwater Wetland	Riverine
Historic Districts	Segment 5 (500 ft)	Segment 10 (500 ft)		



**Preliminary &
Subject to Change**



Alternative X

0 0.25 0.5 1 Miles

June 2018

- | | | | | |
|--------------------|------------------------|---------------------|--------------------|----------|
| Historic Resources | Alternative X Corridor | Segment 8 (500 ft) | Property Parcels | Pond |
| Rivers & Streams | Segment 1 (500 ft) | Segment 9 (500 ft) | Freshwater Wetland | Riverine |
| Railroad | Segment 3 (500 ft) | Segment 10 (500 ft) | Forested Wetland | |
| Historic Districts | Segment 7 (500 ft) | Municipal Boundary | | |

