



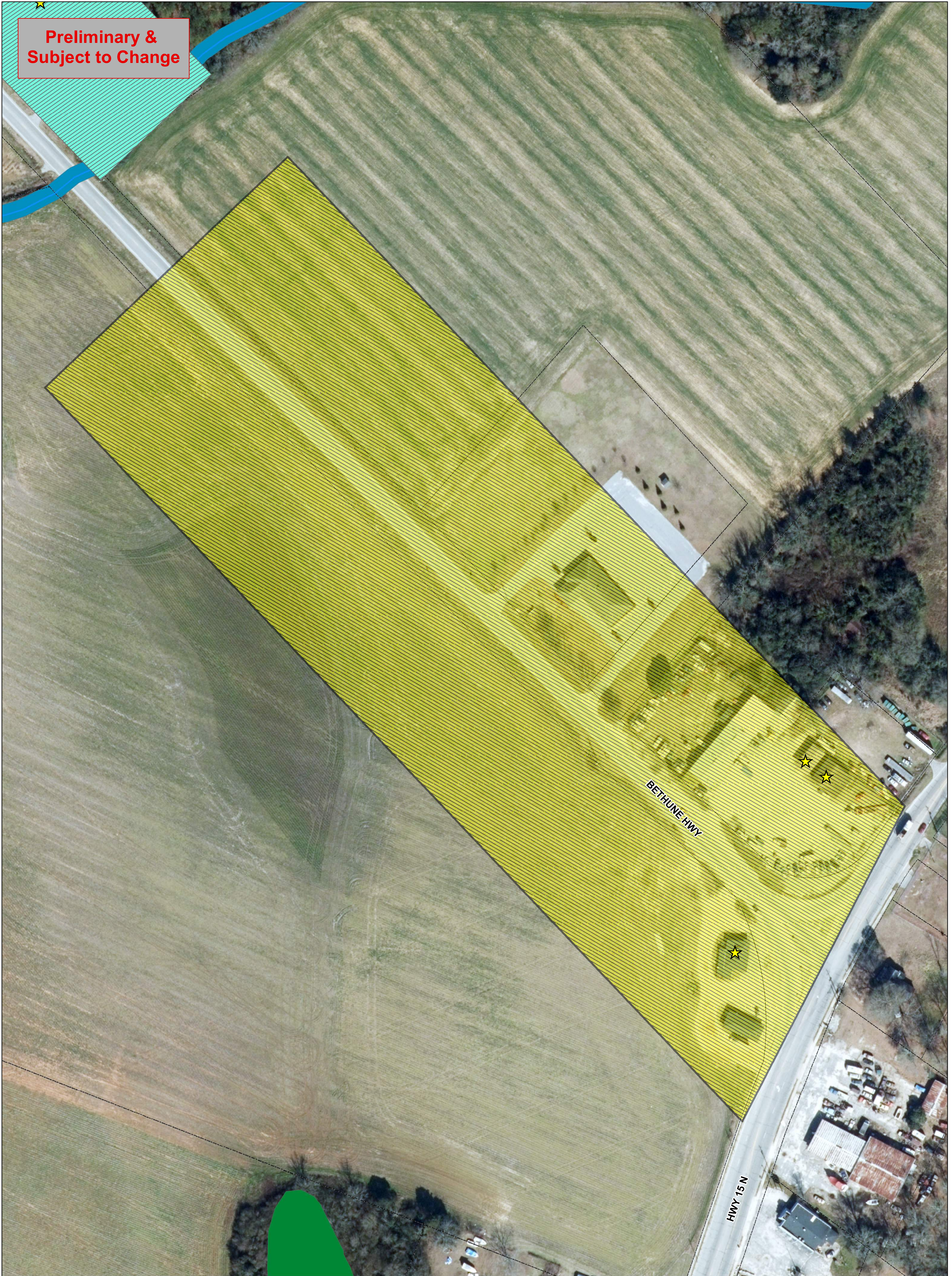
**Preliminary &
Subject to Change**

LUCKNOW RD

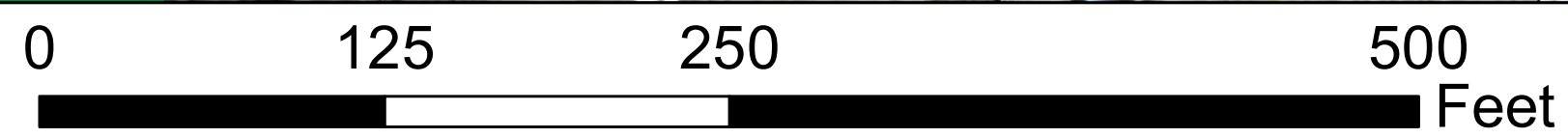
BETHUNE HWY

AIRPORT RD

Segment 1		0 500 1,000 2,000 Feet		June 2018	
★	Architectural Resources		Architectural Districts		Property Parcels
	Rivers & Streams		Segment 1 (500 ft)		Freshwater Wetland
	Railroad		Municipal Boundary		Forested Wetland
					Pond
					Riverine

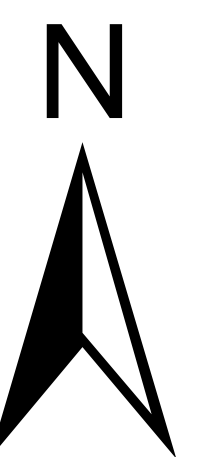


Segment 2



June 2018

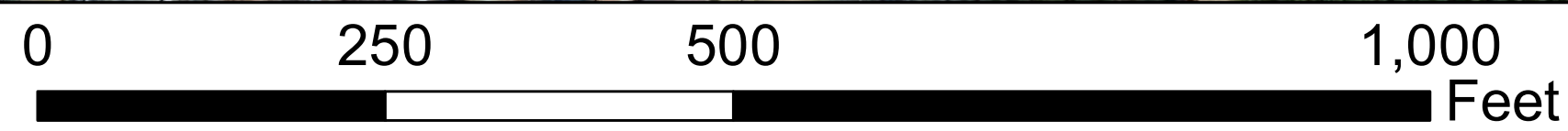
- | | | | |
|---------------------------|-------------------------|--------------------|----------|
| ★ Architectural Resources | Architectural Districts | Property Parcels | Pond |
| Rivers & Streams | Segment 2 (500 ft) | Freshwater Wetland | Riverine |
| Railroad | Municipal Boundary | Forested Wetland | |



**Preliminary &
Subject to Change**

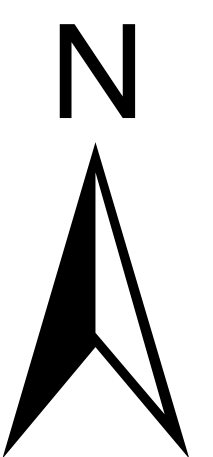


Segment 3



June 2018

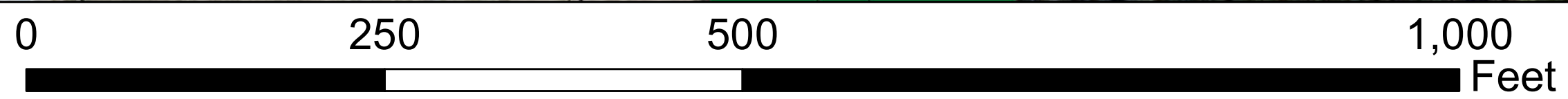
- | | | | |
|---------------------------|-------------------------|--------------------|----------|
| ★ Architectural Resources | Architectural Districts | Property Parcels | Pond |
| Rivers & Streams | Segment 3 (500 ft) | Freshwater Wetland | Riverine |
| Railroad | Municipal Boundary | Forested Wetland | |



**Preliminary &
Subject to Change**

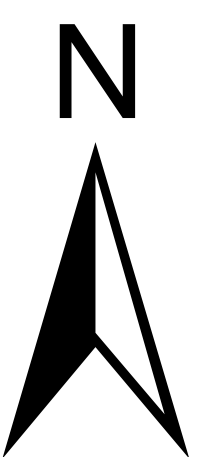


Segment 4



June 2018

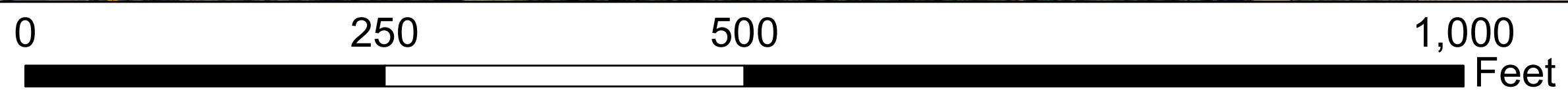
- | | | | |
|---------------------------|-------------------------|--------------------|----------|
| ★ Architectural Resources | Architectural Districts | Property Parcels | Pond |
| Rivers & Streams | Segment 4 (500 ft) | Freshwater Wetland | Riverine |
| Railroad | Municipal Boundary | Forested Wetland | |



**Preliminary &
Subject to Change**

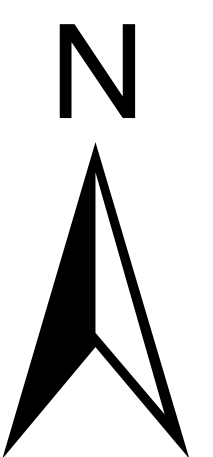


Segment 5

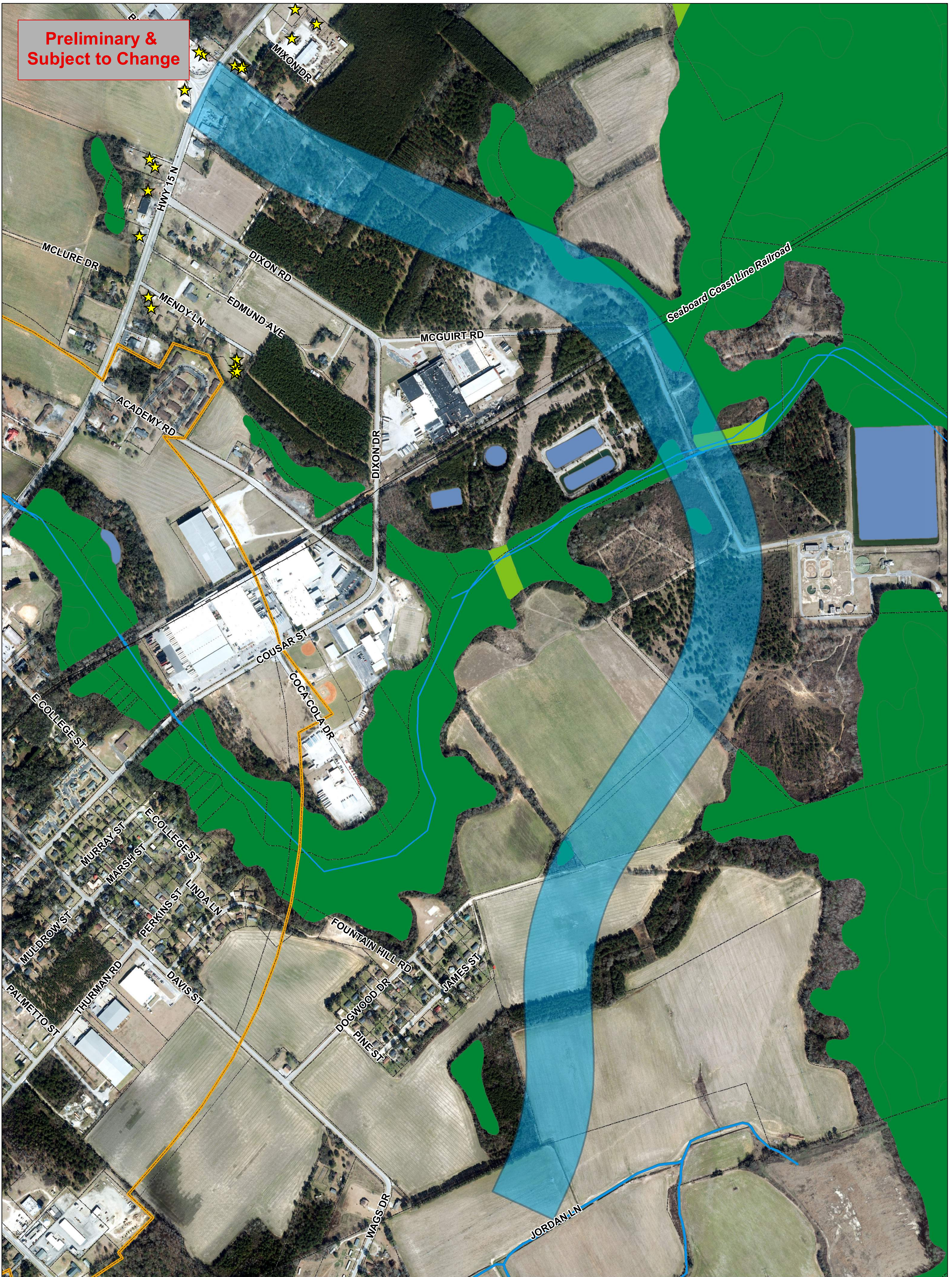


June 2018

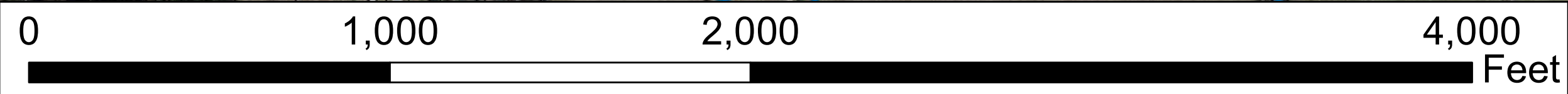
Architectural Resources	Architectural Districts	Property Parcels	Pond
Rivers & Streams	Segment 5 (500 ft)	Freshwater Wetland	Riverine
Railroad	Municipal Boundary	Forested Wetland	



**Preliminary &
Subject to Change**

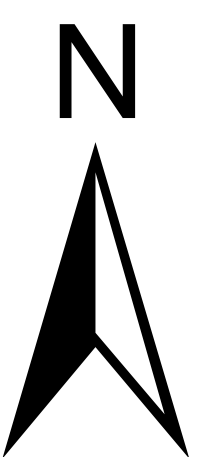


Segment 6

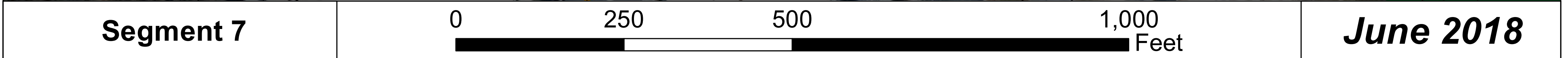
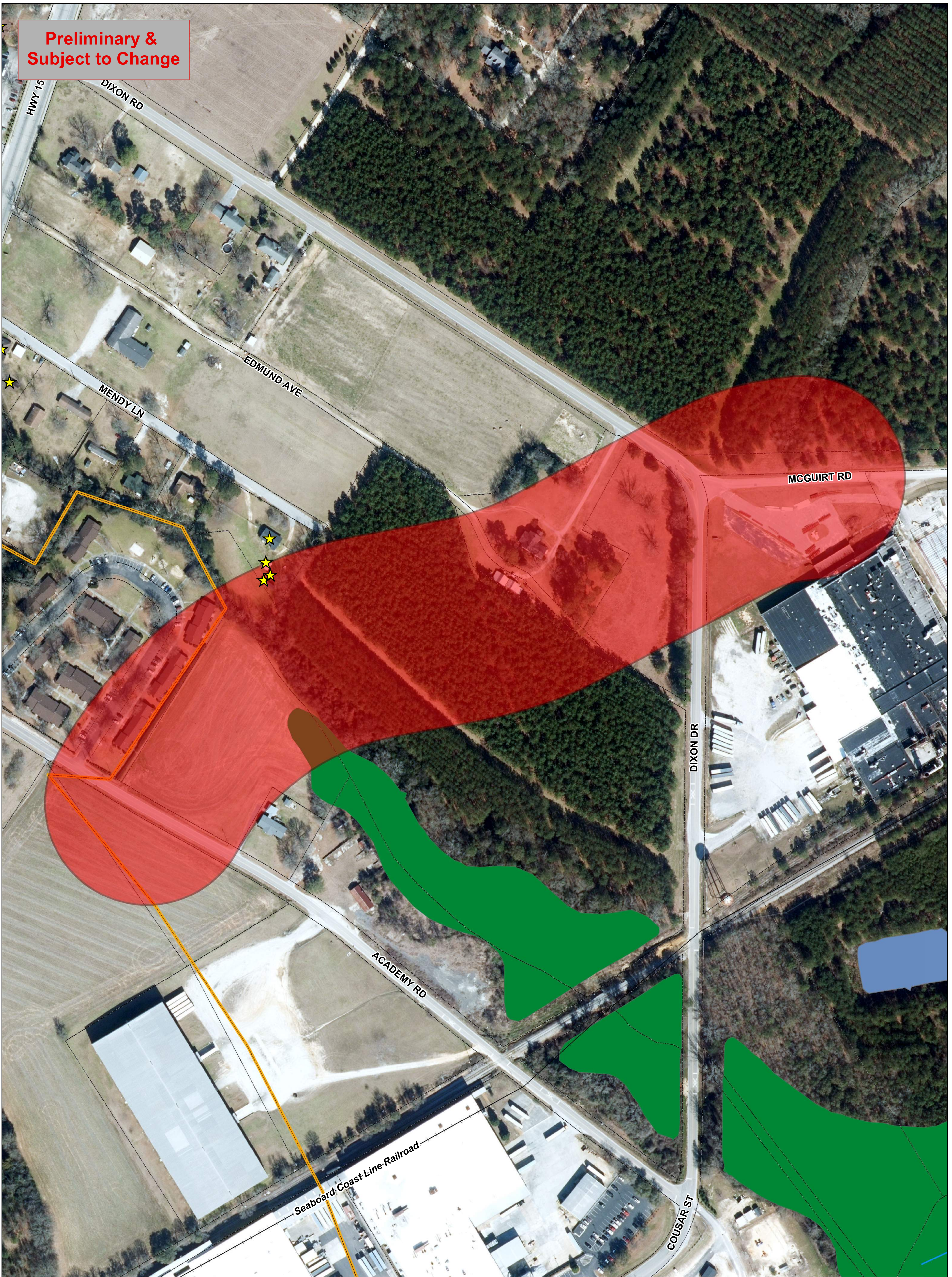


June 2018

- | | | | |
|-------------------------|-------------------------|--------------------|----------|
| Architectural Resources | Architectural Districts | Property Parcels | Pond |
| Rivers & Streams | Segment 6 (500 ft) | Freshwater Wetland | Riverine |
| Railroad | Municipal Boundary | Forested Wetland | |

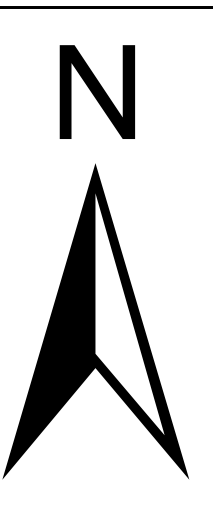


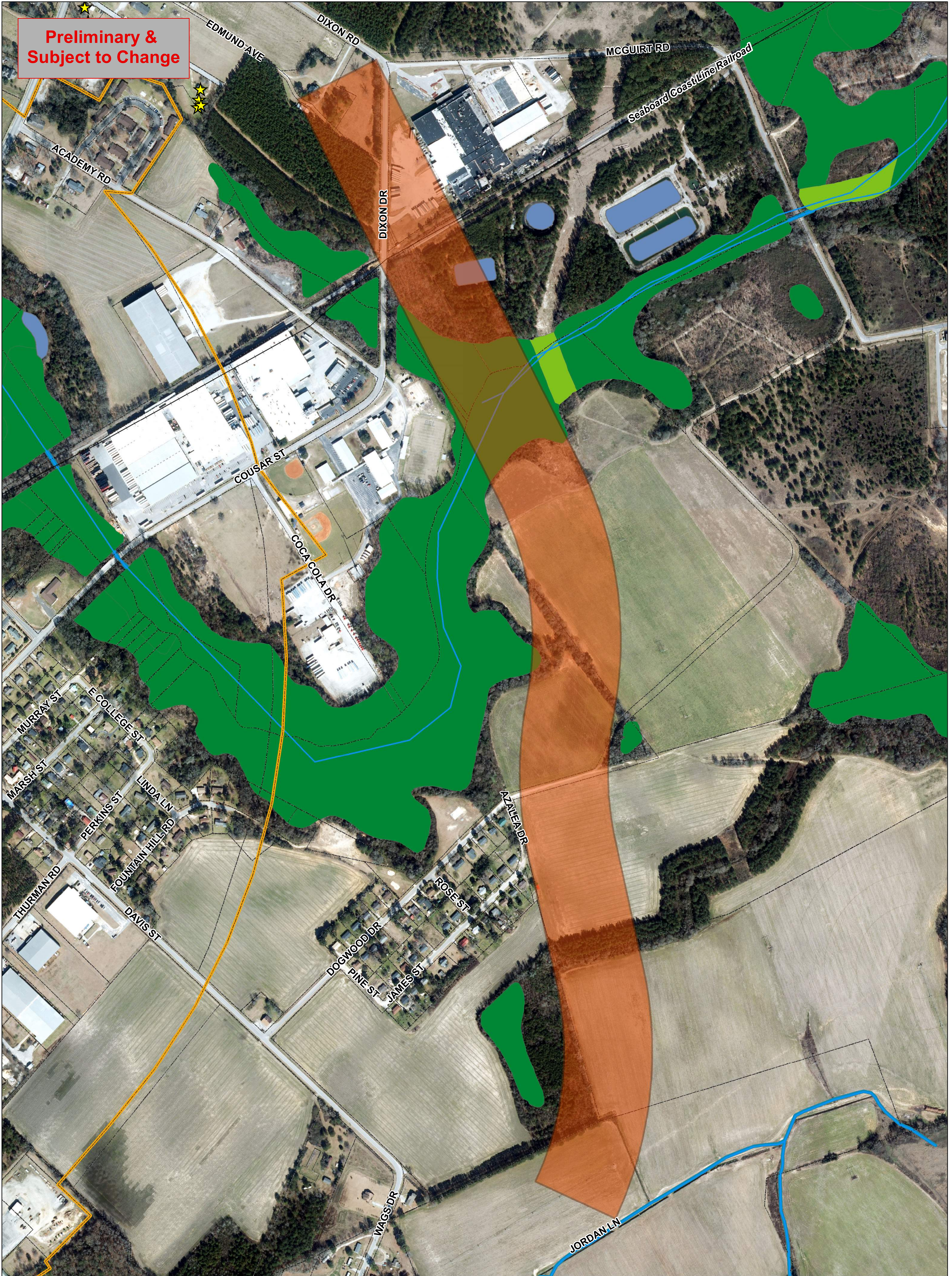
**Preliminary &
Subject to Change**



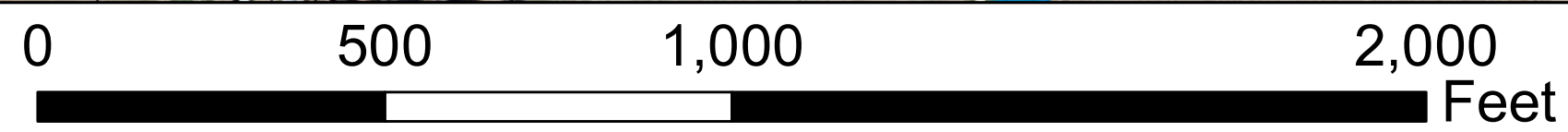
June 2018

Architectural Resources	Architectural Districts	Property Parcels	Pond
Rivers & Streams	Segment 7 (500 ft)	Freshwater Wetland	Riverine
Railroad	Municipal Boundary	Forested Wetland	





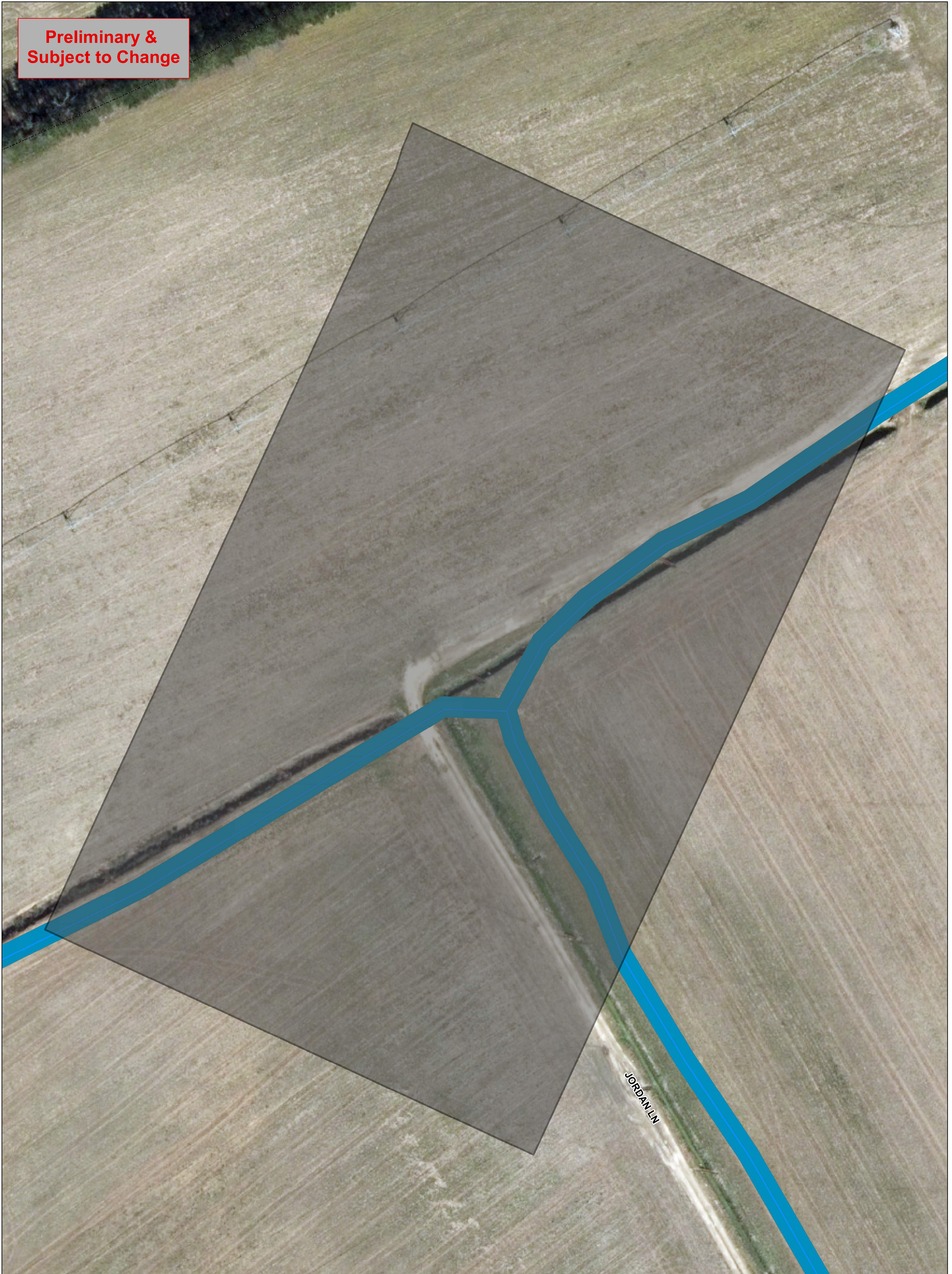
Segment 8



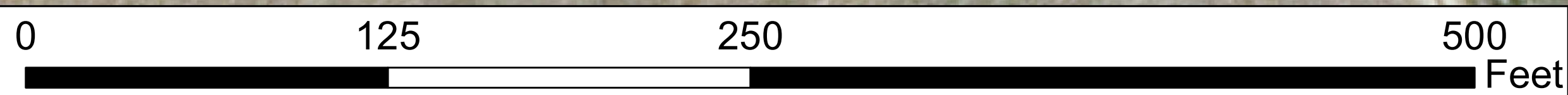
June 2018

Architectural Resources	Architectural Districts	Property Parcels	Pond
Rivers & Streams	Segment 8 (500 ft)	Freshwater Wetland	Riverine
Railroad	Municipal Boundary	Forested Wetland	

**Preliminary &
Subject to Change**

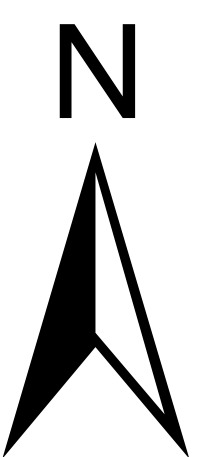


Segment 9



June 2018

- | | | | |
|-------------------------|-------------------------|--------------------|----------|
| Architectural Resources | Architectural Districts | Property Parcels | Pond |
| Rivers & Streams | Segment 9 (500 ft) | Freshwater Wetland | Riverine |
| Railroad | Municipal Boundary | Forested Wetland | |



**Preliminary &
Subject to Change**

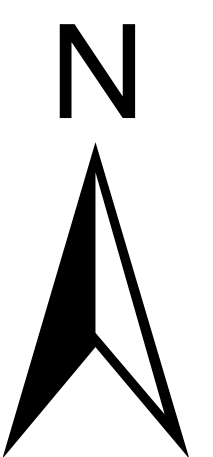


Segment 10

0 250 500 1,000 Feet

June 2018

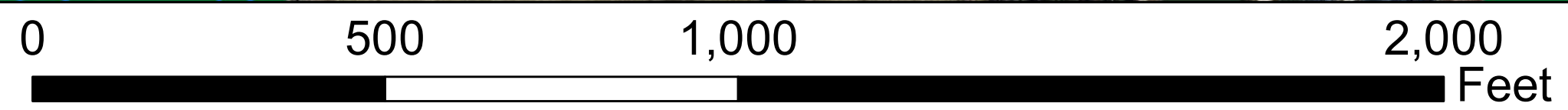
Architectural Resources	Architectural Districts	Property Parcels	Pond
Rivers & Streams	Segment 10 (500 ft)	Freshwater Wetland	Riverine
Railroad	Municipal Boundary	Forested Wetland	



**Preliminary &
Subject to Change**

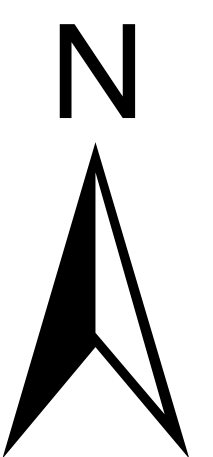


Segment 11



June 2018

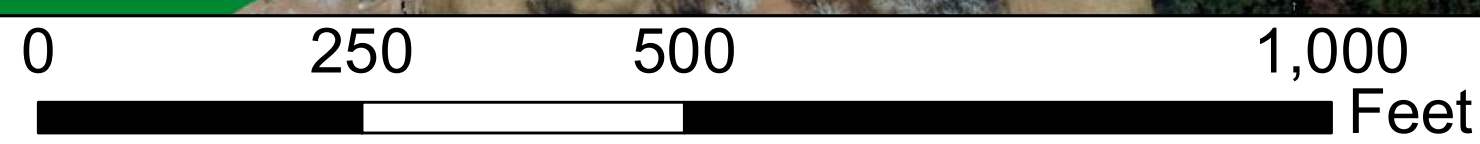
- | | | | |
|---------------------------|-------------------------|--------------------|----------|
| ★ Architectural Resources | Architectural Districts | Property Parcels | Pond |
| Rivers & Streams | Segment 11 (500 ft) | Freshwater Wetland | Riverine |
| Railroad | Municipal Boundary | Forested Wetland | |



**Preliminary &
Subject to Change**

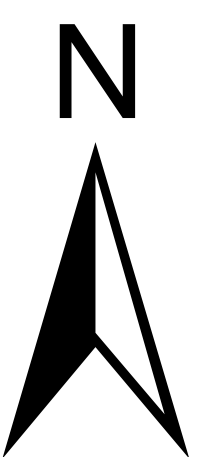


Segment 12

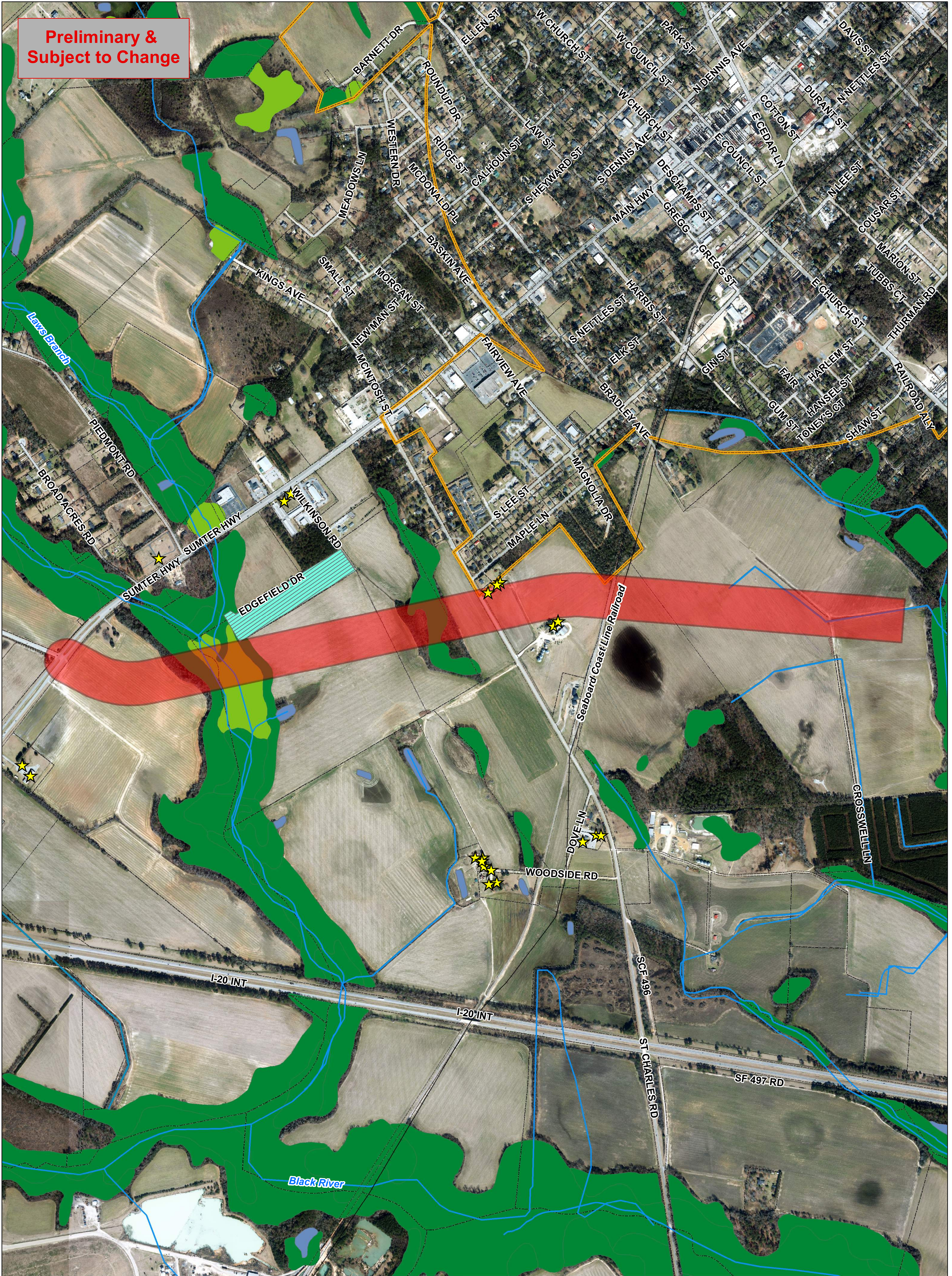


June 2018

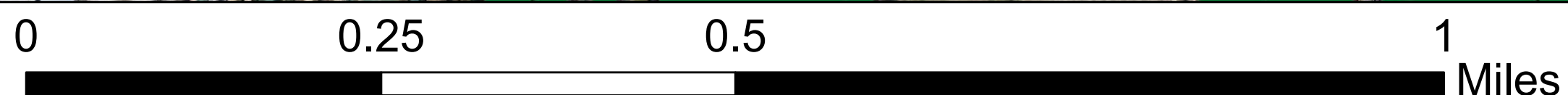
- | | | | |
|---------------------------|-------------------------|--------------------|----------|
| ★ Architectural Resources | Architectural Districts | Property Parcels | Pond |
| Rivers & Streams | Segment 12 (500 ft) | Freshwater Wetland | Riverine |
| Railroad | Municipal Boundary | Forested Wetland | |



**Preliminary &
Subject to Change**

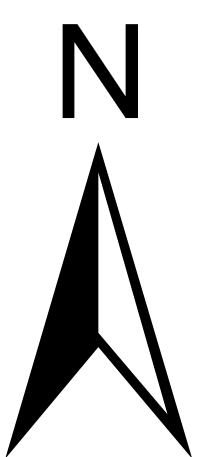


Segment 13



June 2018

- | | | | |
|---------------------------|-------------------------|--------------------|----------|
| ★ Architectural Resources | Architectural Districts | Property Parcels | Pond |
| Rivers & Streams | Segment 13 (500 ft) | Freshwater Wetland | Riverine |
| Railroad | Municipal Boundary | Forested Wetland | |



**Preliminary &
Subject to Change**

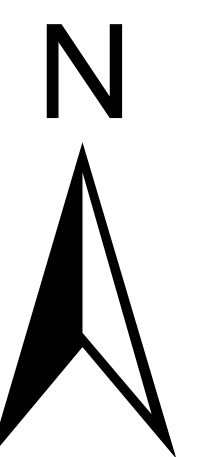


Segment 14

0 500 1,000 2,000
Feet

June 2018

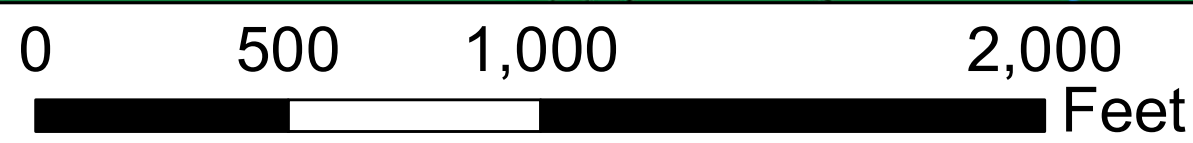
- | | | | |
|---------------------------|-------------------------|--------------------|----------|
| ★ Architectural Resources | Architectural Districts | Property Parcels | Pond |
| Rivers & Streams | Segment 14 (1,100 ft) | Freshwater Wetland | Riverine |
| Railroad | Municipal Boundary | Forested Wetland | |



**Preliminary &
Subject to Change**

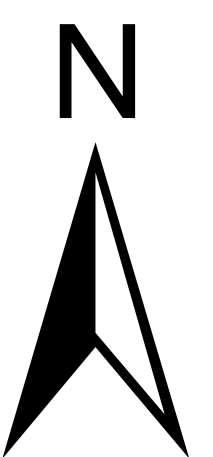


Segment 15

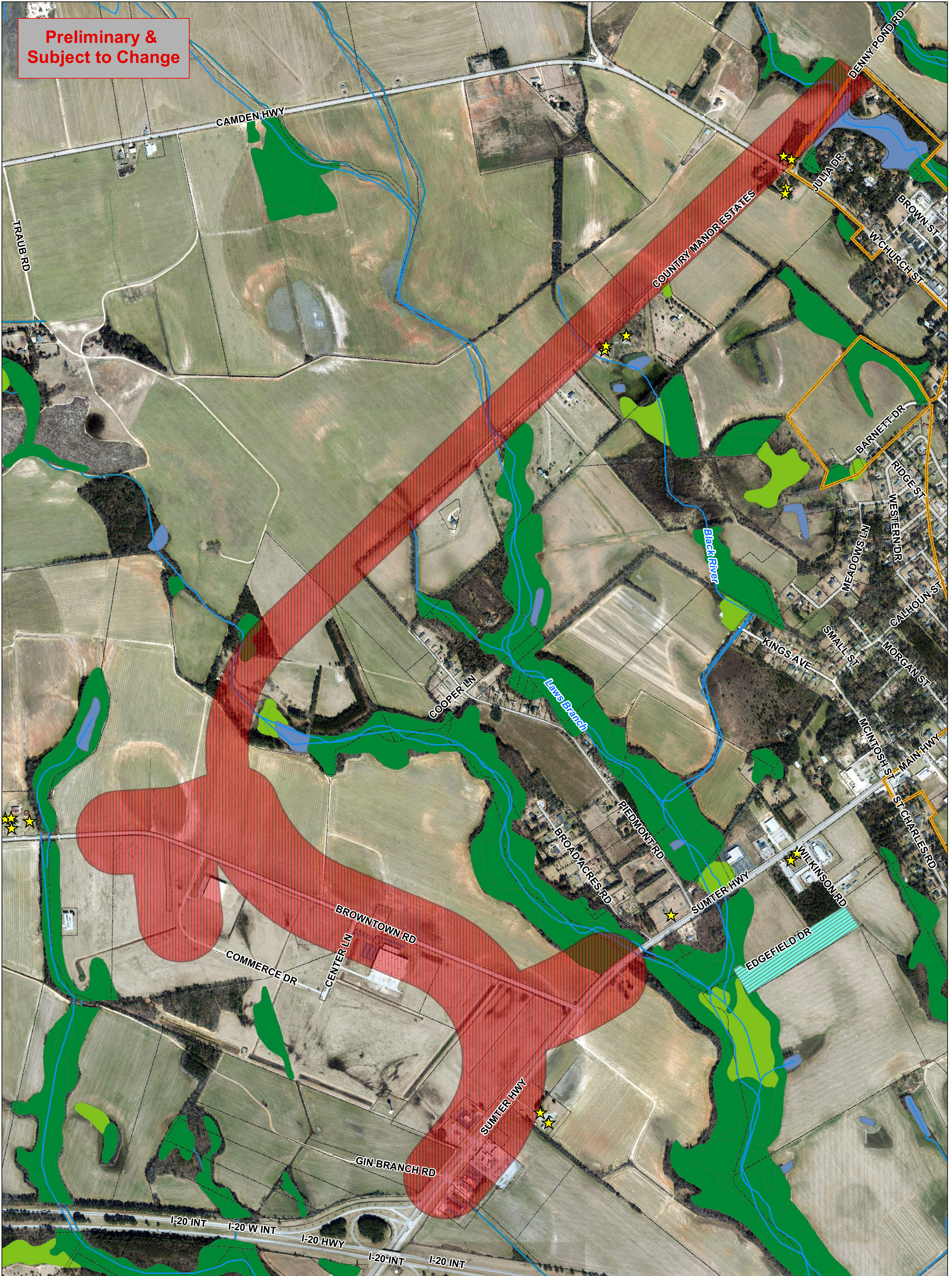


June 2018

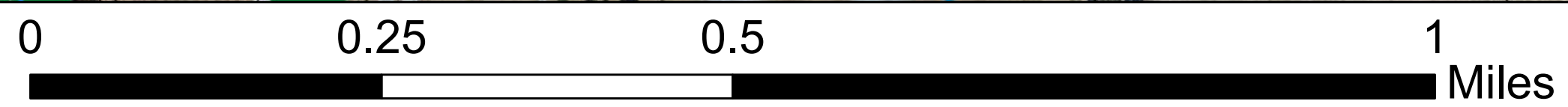
- | | | | |
|-------------------------|-------------------------|--------------------|----------|
| Architectural Resources | Architectural Districts | Property Parcels | Pond |
| Rivers & Streams | Segment 15 (500 ft) | Freshwater Wetland | Riverine |
| Railroad | Municipal Boundary | Forested Wetland | |



**Preliminary &
Subject to Change**

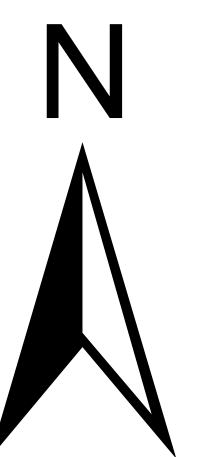


Segment 16



June 2018

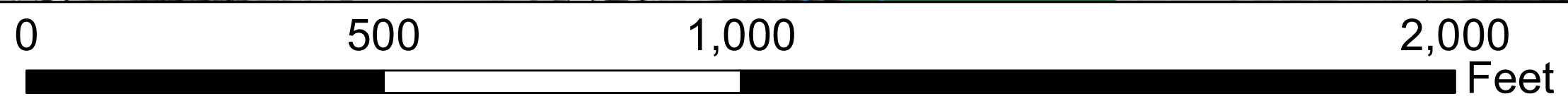
- | | | | |
|-------------------------|-----------------------------|--------------------|----------|
| Architectural Resources | Architectural Districts | Property Parcels | Pond |
| Rivers & Streams | Segment 16 (500 & 1,000 ft) | Freshwater Wetland | Riverine |
| Railroad | Municipal Boundary | Forested Wetland | |



**Preliminary &
Subject to Change**

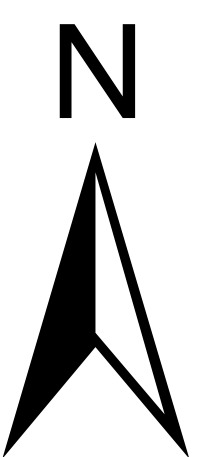


Segment 17



June 2018

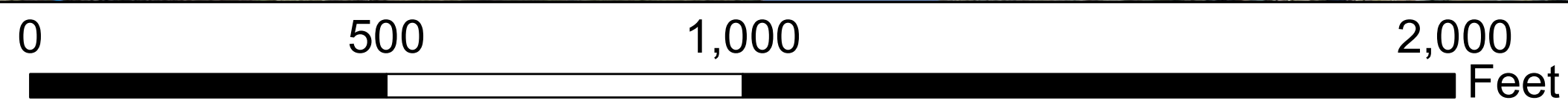
- | | | | |
|---------------------------|-------------------------|--------------------|----------|
| ★ Architectural Resources | Architectural Districts | Property Parcels | Pond |
| Rivers & Streams | Segment 17 (500 ft) | Freshwater Wetland | Riverine |
| Railroad | Municipal Boundary | Forested Wetland | |



**Preliminary &
Subject to Change**

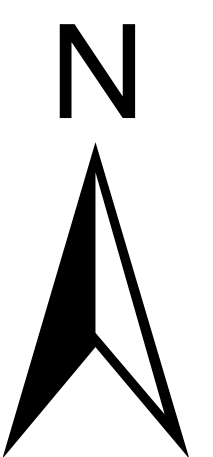


Segment 19



June 2018

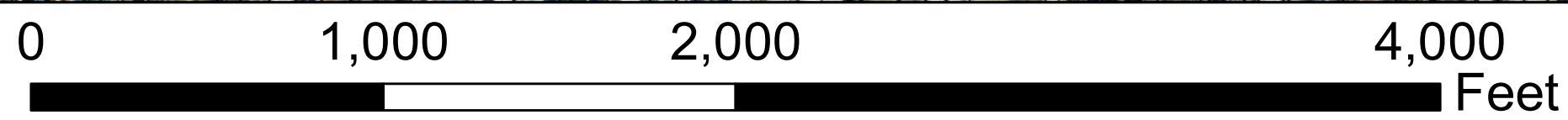
- | | | | |
|-------------------------|-------------------------|--------------------|----------|
| Architectural Resources | Architectural Districts | Property Parcels | Pond |
| Rivers & Streams | Segment 19 (500 ft) | Freshwater Wetland | Riverine |
| Railroad | Municipal Boundary | Forested Wetland | |



**Preliminary &
Subject to Change**

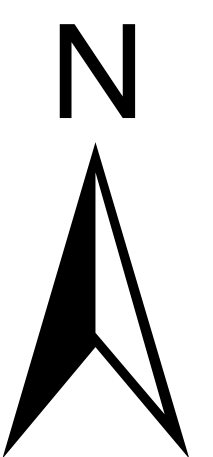


Segment 20



June 2018

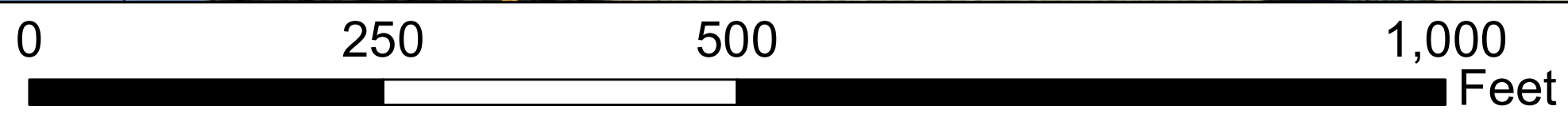
- | | | | |
|-------------------------|-------------------------|--------------------|----------|
| Architectural Resources | Architectural Districts | Property Parcels | Pond |
| Rivers & Streams | Segment 20 (500 ft) | Freshwater Wetland | Riverine |
| Railroad | Municipal Boundary | Forested Wetland | |



**Preliminary &
Subject to Change**

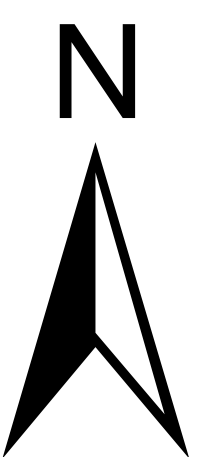


Segment 21



June 2018

- | | | | |
|-------------------------|-------------------------|--------------------|----------|
| Architectural Resources | Architectural Districts | Property Parcels | Pond |
| Rivers & Streams | Segment 21 (500 ft) | Freshwater Wetland | Riverine |
| Railroad | Municipal Boundary | Forested Wetland | |



**Preliminary &
Subject to Change**

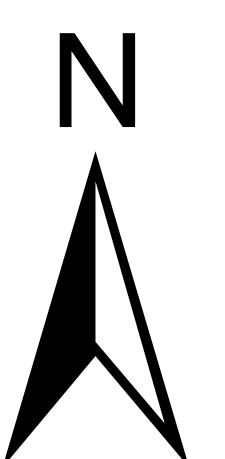


Segment 22

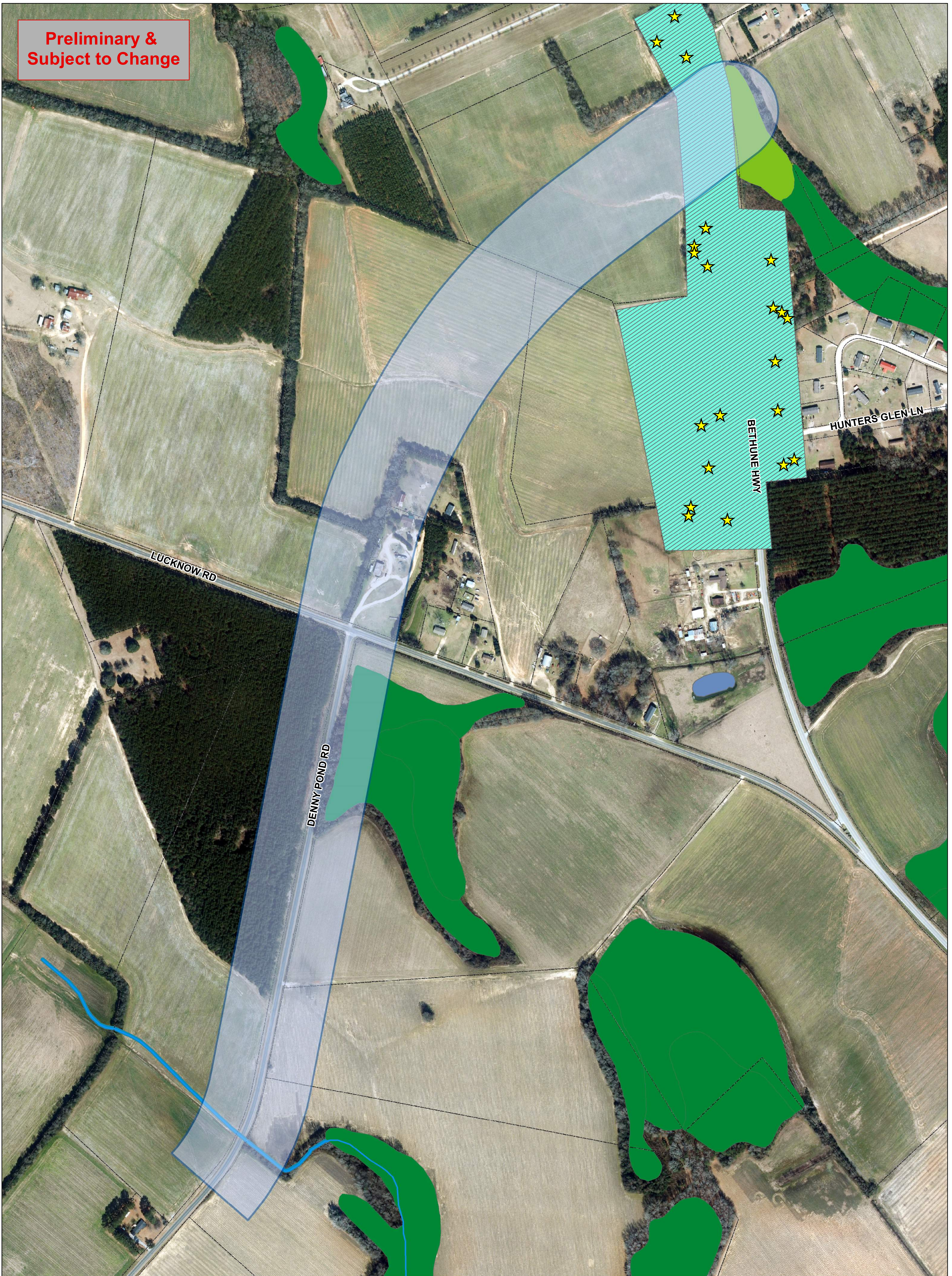
0 250 500 1,000 Feet

June 2018

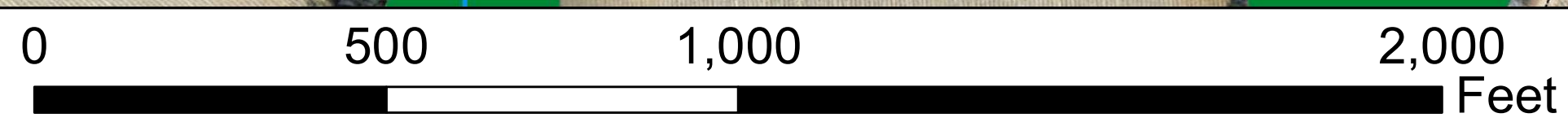
- | | | | |
|---------------------------|-------------------------|--------------------|----------|
| ★ Architectural Resources | Architectural Districts | Property Parcels | Pond |
| Rivers & Streams | Segment 22 (500 ft) | Freshwater Wetland | Riverine |
| Railroad | Municipal Boundary | Forested Wetland | |



**Preliminary &
Subject to Change**

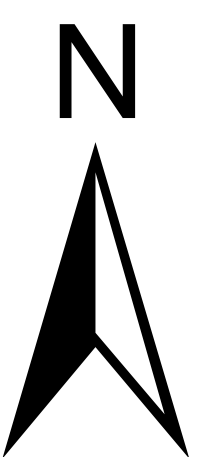


Segment 24



June 2018

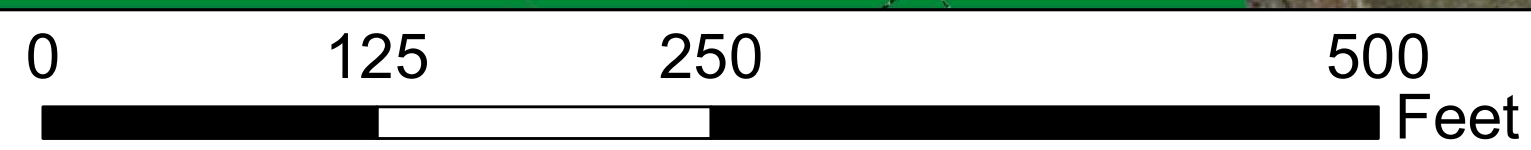
- | | | | |
|---------------------------|-------------------------|--------------------|----------|
| ★ Architectural Resources | Architectural Districts | Property Parcels | Pond |
| Rivers & Streams | Segment 24 (500 ft) | Freshwater Wetland | Riverine |
| Railroad | Municipal Boundary | Forested Wetland | |



**Preliminary &
Subject to Change**

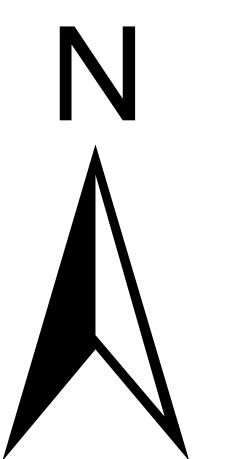


Segment 25



June 2018

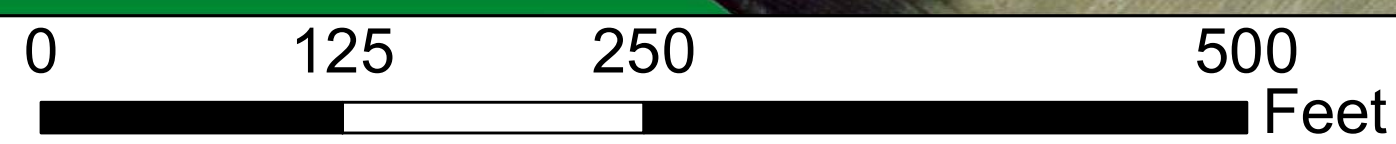
- | | | | |
|---------------------------|-------------------------|--------------------|----------|
| ★ Architectural Resources | Architectural Districts | Property Parcels | Pond |
| Rivers & Streams | Segment 25 (500 ft) | Freshwater Wetland | Riverine |
| Railroad | Municipal Boundary | Forested Wetland | |



**Preliminary &
Subject to Change**



Segment 26



June 2018

- | | | | |
|---------------------------|-------------------------|--------------------|----------|
| ★ Architectural Resources | Architectural Districts | Property Parcels | Pond |
| Rivers & Streams | Segment 26 (500 ft) | Freshwater Wetland | Riverine |
| Railroad | Municipal Boundary | Forested Wetland | |

