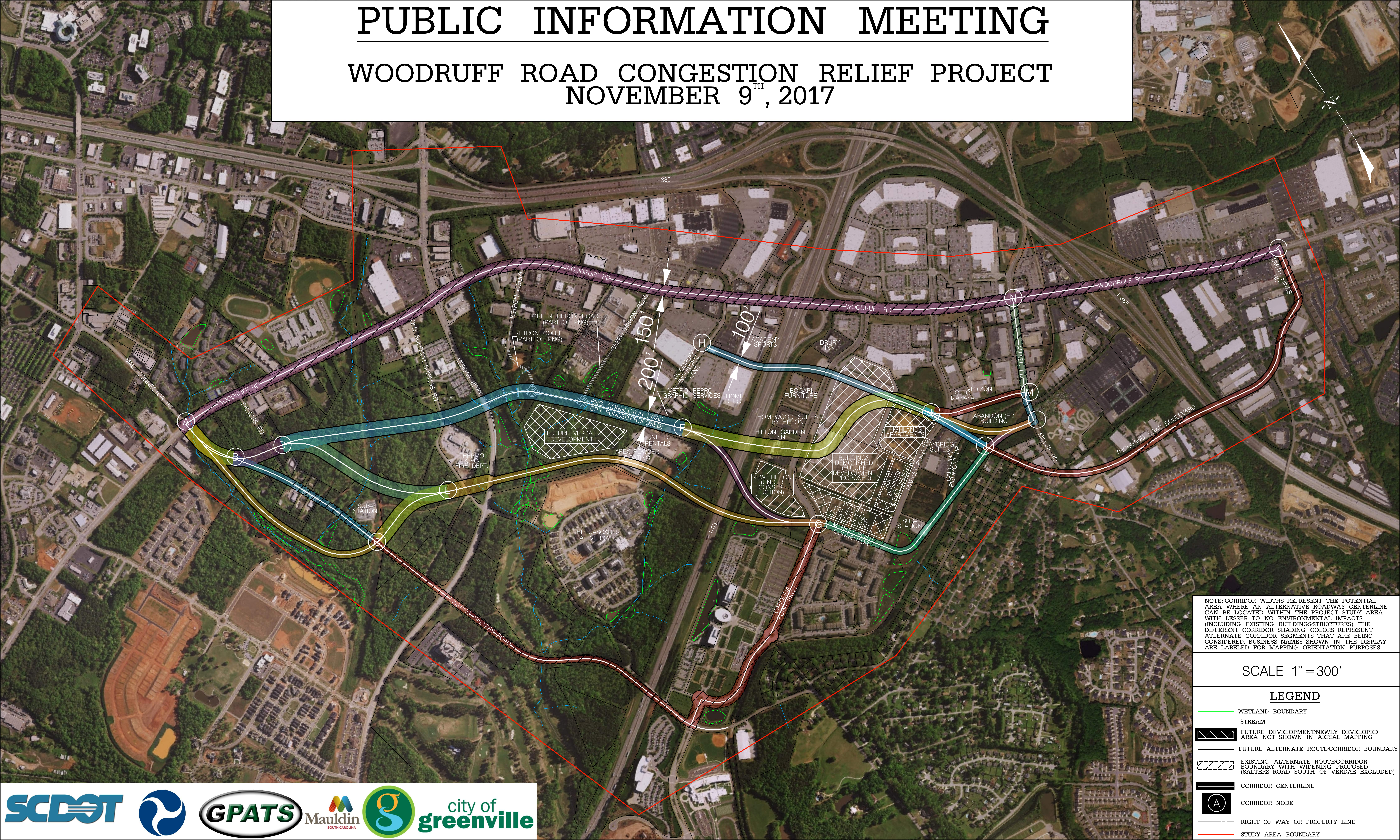


PUBLIC INFORMATION MEETING

WOODRUFF ROAD CONGESTION RELIEF PROJECT NOVEMBER 9TH, 2017



NOTE: CORRIDOR WIDTHS REPRESENT THE POTENTIAL AREA WHERE AN ALTERNATIVE ROADWAY CENTERLINE CAN BE LOCATED WITHIN THE PROJECT STUDY AREA WITH LESSER TO NO ENVIRONMENTAL IMPACTS (INCLUDING EXISTING BUILDINGS/STRUCTURES). THE DIFFERENT CORRIDOR SHADING COLORS REPRESENT ALTERNATE CORRIDOR SEGMENTS THAT ARE BEING CONSIDERED. BUSINESS NAMES SHOWN IN THE DISPLAY ARE LABELED FOR MAPPING ORIENTATION PURPOSES.

SCALE 1" = 300'

LEGEND

- WETLAND BOUNDARY
- STREAM
- FUTURE DEVELOPMENT/NEWLY DEVELOPED AREA NOT SHOWN IN AERIAL MAPPING
- FUTURE ALTERNATE ROUTE/CORRIDOR BOUNDARY
- EXISTING ALTERNATE ROUTE/CORRIDOR BOUNDARY WITH WIDENING PROPOSED (SALTERS ROAD SOUTH OF VERDAE EXCLUDED)
- CORRIDOR CENTERLINE
- CORRIDOR NODE
- RIGHT OF WAY OR PROPERTY LINE
- STUDY AREA BOUNDARY